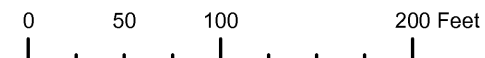


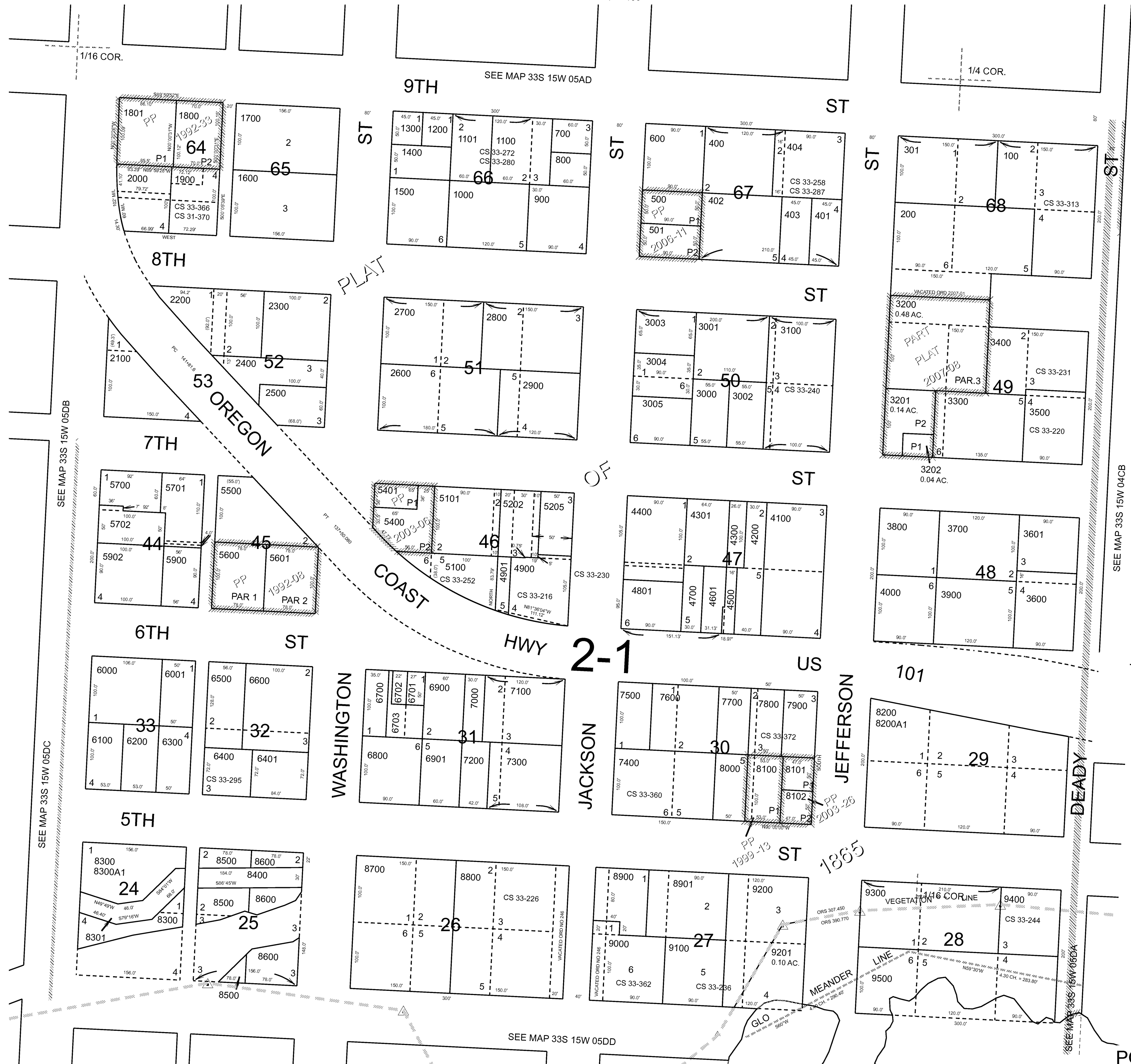
THIS MAP WAS PREPARED FOR ASSESSMENT PURPOSE ONLY



N.E. 1/4 S.E. 1/4 SEC. 5 T.33S. R.15W. W.M. CURRY COUNTY

1" = 100'

33S15W05DA PORT ORFORD



- CANCELLED:
- 201
- 300
- 3401
- 4600
- 4602
- 4800
- 5000
- 5001
- 5200
- 5201
- 5203
- 5204
- 5300
- 5703
- 5800
- 5801
- 5901
- 6704
- 8300A1
- 8902
- 9401

Revised: RAA 2/22/2010

PORT ORFORD 33S15W05DA