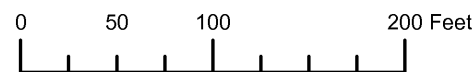
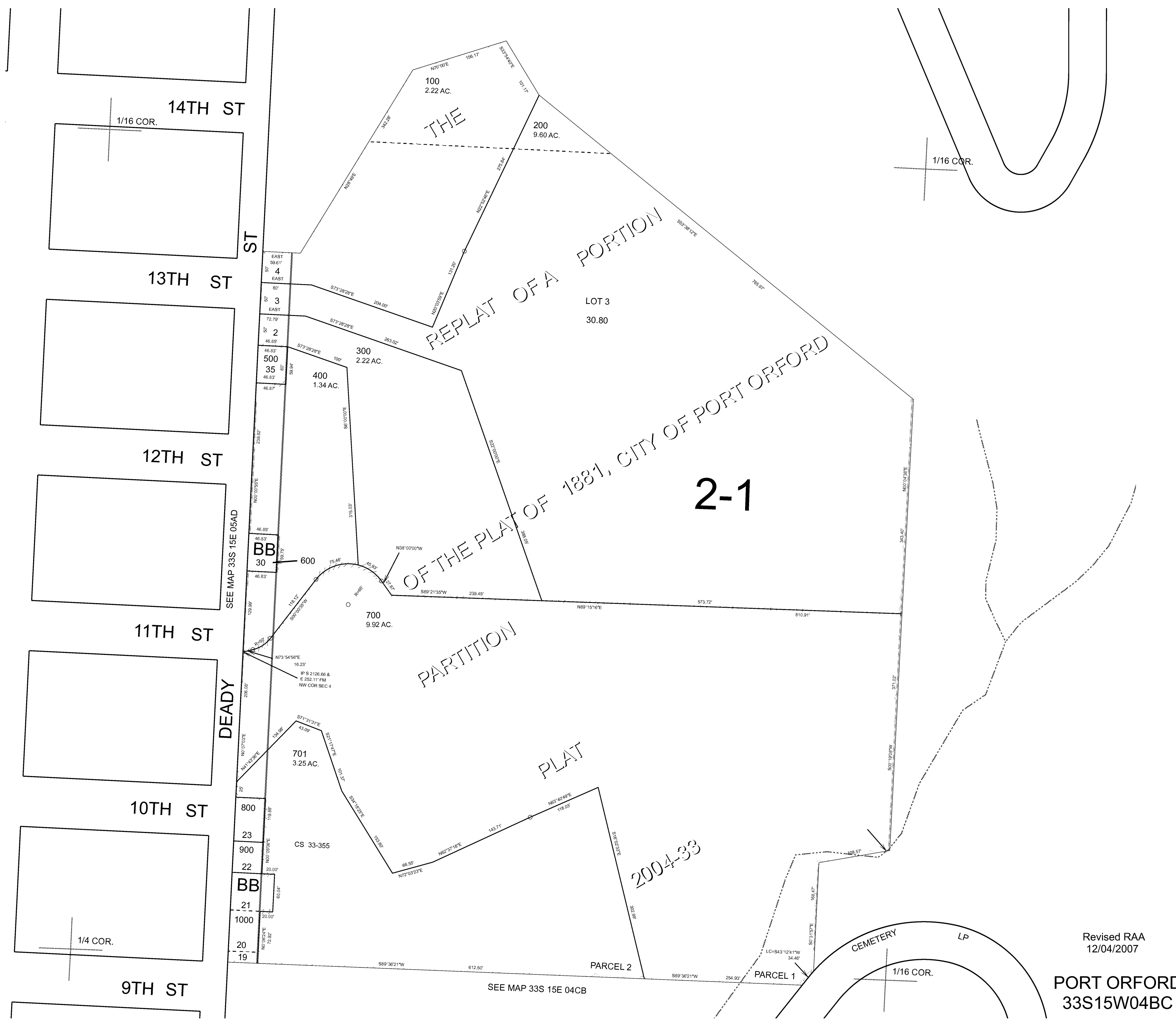


THIS MAP WAS PREPARED FOR ASSESSMENT PURPOSE ONLY



S.W.1/4 N.W.1/4 SEC.4 T.33S. R.15W. W.M.
CURRY COUNTY
1" = 100'

33S15W04BC
PORT ORFORD
CANCELLED:



Revised RAA
12/04/2007

PORT ORFORD
33S15W04BC